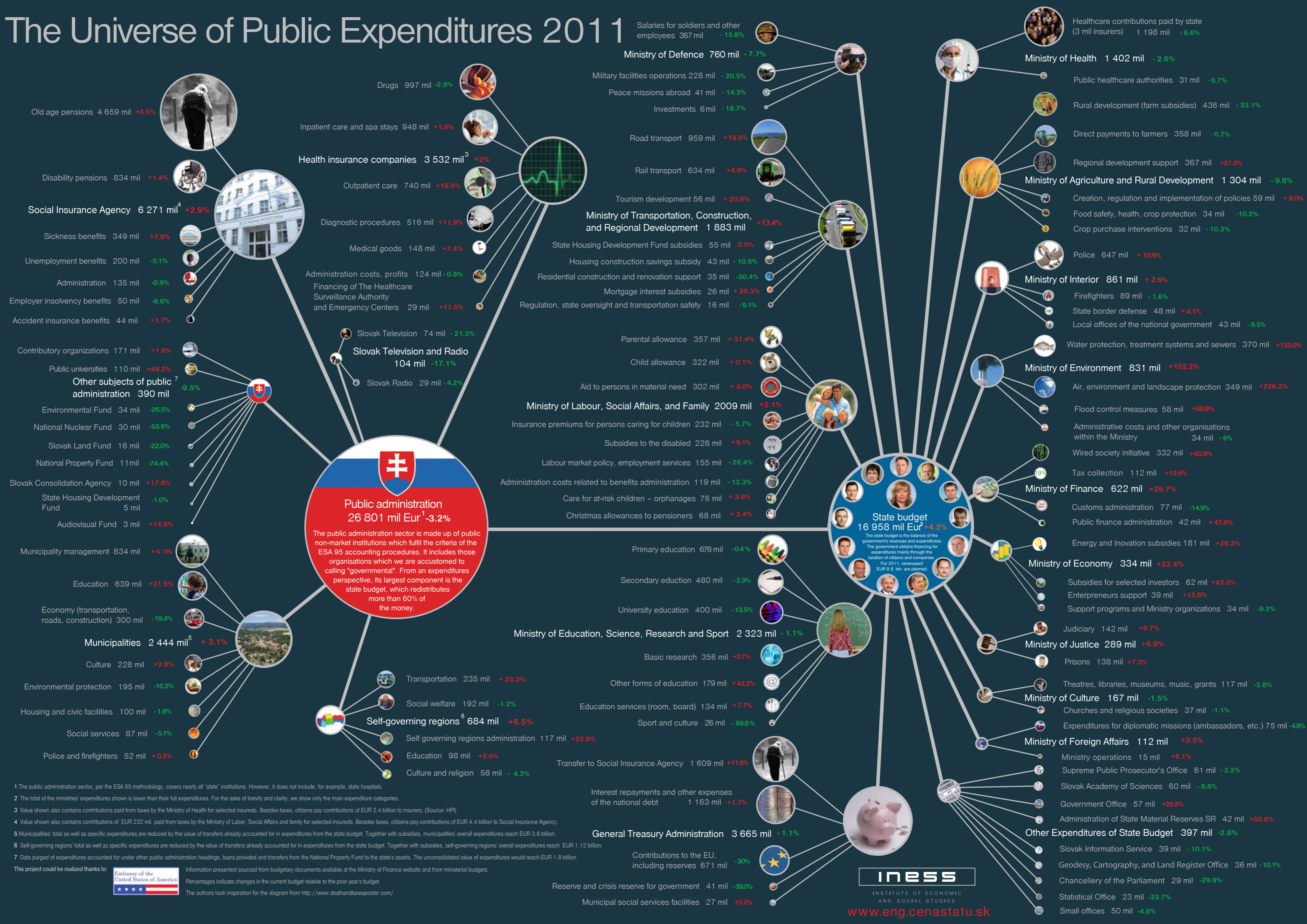


The Universe of Public Expenditures 2011



Public administration
26 801 mil Eur¹ -3.2%

The public administration sector is made up of public non-market institutions which fulfil the criteria of the ESA 95 accounting procedures. It includes those organisations which we are accustomed to calling "governmental". From an expenditures perspective, its largest component is the state budget, which redistributes more than 60% of the money.

State budget
16 958 mil Eur² +4.2%

The state budget is the balance of the government's revenues and expenditures. The government obtains financing for expenditures mainly through the taxation of citizens and companies. For 2011, revenues of EUR 8.8 bln. are planned.

- Old age pensions 4 659 mil +3.5%
- Disability pensions 834 mil +1.4%
- Social Insurance Agency** 6 271 mil⁴ +2.9%
- Sickness benefits 349 mil +7.8%
- Unemployment benefits 200 mil -5.1%
- Administration 135 mil -0.9%
- Employer insolvency benefits 50 mil -6.6%
- Accident insurance benefits 44 mil +1.7%
- Contributory organizations 171 mil +1.9%
- Public universities 110 mil +49.2%
- Other subjects of public administration** 390 mil -9.5%
- Environmental Fund 34 mil -26.5%
- National Nuclear Fund 30 mil -65.6%
- Slovak Land Fund 16 mil -22.0%
- National Property Fund 11 mil -74.4%
- Slovak Consolidation Agency 10 mil +17.8%
- State Housing Development Fund 5 mil -1.0%
- Audiovisual Fund 3 mil +14.9%

- Municipality management 834 mil +4.0%
- Education 639 mil +31.6%
- Economy (transportation, roads, construction) 300 mil -19.4%
- Municipalities** 2 444 mil⁵ +3.1%
- Culture 228 mil +2.8%
- Environmental protection 195 mil -16.2%
- Housing and civic facilities 100 mil -1.8%
- Social services 87 mil -5.1%
- Police and firefighters 52 mil +0.5%

- Transportation 235 mil +23.3%
- Social welfare 192 mil -1.2%
- Self-governing regions**⁶ 684 mil +6.5%
- Self governing regions administration 117 mil +22.9%
- Education 98 mil +5.6%
- Culture and religion 58 mil -4.3%

- Ministry of Defence** 760 mil -7.7%
- Military facilities operations 228 mil -20.5%
- Peace missions abroad 41 mil -14.3%
- Investments 6 mil -18.7%
- Road transport 959 mil +19.8%
- Rail transport 634 mil +4.9%
- Tourism development 56 mil +20.6%
- Ministry of Transportation, Construction, and Regional Development** 1 883 mil +13.4%
- State Housing Development Fund subsidies 55 mil 0.0%
- Housing construction savings subsidy 43 mil -10.6%
- Residential construction and renovation support 35 mil -30.4%
- Mortgage interest subsidies 26 mil +26.3%
- Regulation, state oversight and transportation safety 16 mil -9.1%

- Parental allowance 357 mil +31.4%
- Child allowance 322 mil +0.1%
- Aid to persons in material need 302 mil +5.0%
- Ministry of Labour, Social Affairs, and Family** 2 009 mil +2.1%
- Insurance premiums for persons caring for children 232 mil -5.7%
- Subsidies to the disabled 228 mil +6.1%
- Labour market policy, employment services 155 mil -26.4%
- Administration costs related to benefits administration 119 mil -12.3%
- Care for at-risk children - orphanages 76 mil +3.8%
- Christmas allowances to pensioners 68 mil +2.4%

- Primary education 676 mil -0.4%
- Secondary education 480 mil -2.3%
- University education 400 mil -13.5%
- Ministry of Education, Science, Research and Sport** 2 323 mil -1.1%
- Basic research 356 mil +2.7%
- Other forms of education 179 mil +42.2%
- Education services (room, board) 134 mil +7.7%
- Sport and culture 26 mil -69.8%
- Transfer to Social Insurance Agency 1 609 mil +11.6%
- Interest repayments and other expenses of the national debt 1 163 mil +1.7%

- General Treasury Administration** 3 665 mil -1.1%
- Contributions to the EU, including reserves 671 mil -30%
- Reserve and crisis reserve for government 41 mil -39.0%
- Municipal social services facilities 27 mil +3.2%

- Ministry of Health** 1 402 mil -2.6%
- Public healthcare authorities 31 mil -6.7%
- Rural development (farm subsidies) 436 mil -33.1%
- Direct payments to farmers 358 mil -0.7%
- Regional development support 367 mil +27.6%
- Ministry of Agriculture and Rural Development** 1 304 mil -9.8%
- Creation, regulation and implementation of policies 59 mil +9.0%
- Food safety, health, crop protection 34 mil -10.2%
- Crop purchase interventions 32 mil -10.3%
- Police 647 mil +10.9%
- Ministry of Interior** 861 mil +2.6%
- Firefighters 89 mil -1.6%
- State border defense 48 mil +4.1%
- Local offices of the national government 43 mil -9.5%
- Water protection, treatment systems and sewers 370 mil +135.0%
- Ministry of Environment** 831 mil +152.2%
- Air, environment and landscape protection 349 mil +226.2%
- Flood control measures 58 mil +58.9%
- Administrative costs and other organisations within the Ministry 34 mil -6%
- Wired society initiative 332 mil +60.9%
- Tax collection 112 mil +12.6%
- Ministry of Finance** 622 mil +26.7%
- Customs administration 77 mil -14.9%
- Public finance administration 42 mil +47.6%
- Energy and Innovation subsidies 181 mil +28.3%
- Ministry of Economy** 334 mil +22.4%
- Subsidies for selected investors 62 mil +43.5%
- Entrepreneurs support 39 mil +12.8%
- Support programs and Ministry organizations 34 mil -9.2%
- Judiciary 142 mil +6.7%
- Ministry of Justice** 289 mil +6.9%
- Prisons 138 mil +7.3%
- Theatres, libraries, museums, music, grants 117 mil -3.8%
- Ministry of Culture** 167 mil -1.5%
- Churches and religious societies 37 mil -1.1%
- Expenditures for diplomatic missions (ambassadors, etc.) 75 mil -4.8%
- Ministry of Foreign Affairs** 112 mil +3.5%
- Ministry operations 15 mil +6.1%
- Supreme Public Prosecutor's Office 61 mil -2.2%
- Slovak Academy of Sciences 60 mil -8.8%
- Government Office 57 mil +25.5%
- Administration of State Material Reserves SR 42 mil +50.8%
- Other Expenditures of State Budget** 397 mil -2.8%
- Slovak Information Service 39 mil -10.1%
- Geodesy, Cartography, and Land Register Office 36 mil -10.1%
- Chancellery of the Parliament 29 mil -29.9%
- Statistical Office 23 mil -22.7%
- Small offices 50 mil -4.8%

1 The public administration sector, per the ESA 95 methodology, covers nearly all "state" institutions. However, it does not include, for example, state hospitals.
 2 The total of the ministries' expenditures shown is lower than their full expenditures. For the sake of brevity and clarity, we show only the main expenditure categories.
 3 Value shown also contains contributions paid from taxes by the Ministry of Health for selected insureds. Besides taxes, citizens pay contributions of EUR 2.4 billion to insurers. (Source: HPI)
 4 Value shown also contains contributions of EUR 232 mil. paid from taxes by the Ministry of Labor, Social Affairs and family for selected insureds. Besides taxes, citizens pay contributions of EUR 4.4 billion to Social Insurance Agency.
 5 Municipalities' total as well as specific expenditures are reduced by the value of transfers already accounted for in expenditures from the state budget. Together with subsidies, municipalities' overall expenditures reach EUR 3.8 billion.
 6 Self-governing regions' total as well as specific expenditures are reduced by the value of transfers already accounted for in expenditures from the state budget. Together with subsidies, self-governing regions' overall expenditures reach EUR 1.12 billion.
 7 Data purged of expenditures accounted for under other public administration headings, loans provided and transfers from the National Property Fund to the state's assets. The unconsolidated value of expenditures would reach EUR 1.8 billion.

This project could be realized thanks to: Information presented sourced from budgetary documents available at the Ministry of Finance website and from ministerial budgets. Percentages indicate changes in the current budget relative to the prior year's budget. The authors took inspiration for the diagram from <http://www.deathandtaxesposter.com/>